

# Mega Cargo on the Move...

*Oversized Project Cargo*

## Think Outside the Box



*We take it personally*

**Orient Overseas Container Line (OOCL)** is one of the world's leading container transport and logistics service providers, with more than 270 offices in 60 countries around the world. OOCL offers more than 80 weekly services, a customer-centric service, innovative IT systems, a global network, and dedicated commitment to safety, quality and environmental care.

OOCL understands that good things can come in all forms, shapes and sizes. Special and oversized cargo can be particularly tricky and challenging to transport from place to place. Our dedicated and professional team works closely 24/7 to take the utmost care of your special cargo needs.

From oversized cargo to yachts and other special projects, OOCL offers a dedicated team, special equipment, an extensive network and our unique "Take It Personally" service to ship your special cargo all over the world at very competitive prices.

## Oversized Cargo and Yacht Shipping

### Oversized Cargo

OOCL's dedicated project cargo team offers expertise in the handling and stowage of your oversized cargo. We know that this type of unique cargo requires extra special care and handling, and we aim at transporting your special equipment in the safest way possible. We "Take It Personally" to deliver your special cargo to its destination in pristine condition.

We offer a one-stop reliable service which includes:

- Dedicated expertise and personal care
- Fast response time to your enquiry
- An extensive network and frequent sailing schedules
- Coordination with our in-house logistics provider, OOCL Logistics, to provide door-to-door delivery



### Yacht Shipping

OOCL's special cargo team is highly experienced in transporting valuable yachts. You can trust our professional team to transport your yacht safely and securely.

We offer a fixed schedule and port-to-port service which is ideal for shipments to and from Asia. OOCL offers very competitive rates with a one-stop-shop service and fast responses to your enquiries.



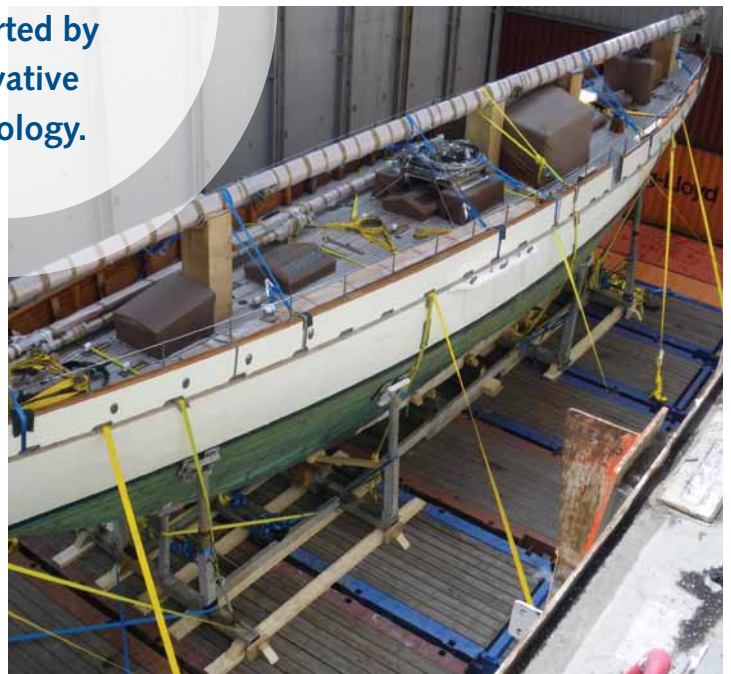
## Dedicated Team

At OOCL, we are renowned for our 'Take It Personally' service as well as our highly dedicated and professional people. You can trust our dedicated team to handle your special cargo with extra care and attention to detail. Our project cargo team can provide expert advice, such as terminal and vessel restrictions, documentation issues, equipment and best stowage instruction.

For more details, please contact our local customer service representatives or email our Project Cargo team at [pct@oocl.com](mailto:pct@oocl.com) now. We will respond to your enquiry immediately.



We offer 360°  
door-to-door services  
with a dedicated team  
supported by  
innovative  
technology.





## Special Equipment for Special Cargo

Your special cargo will need dedicated equipment to carry it in a comfortable, safe and secure environment. OOCL offers 20 and 40-foot flatrack, as well as 20 and 40-foot open top containers.

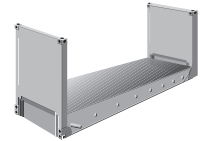
### 20-foot / 40-foot Flatracks

Flatracks (FL) are specially used for heavy loads or cargo that needs loading from the top or sides, such as pipes and machinery. OOCL offers collapsible and non-collapsible containers with or without walls. Manufactured from steel, flatrack containers come in 20-foot and 40-foot sizes.

The dimensions below are for reference only. Actual dimensions are to be checked on-site.

Container Dimension						Weight		
			Length	Width	Height	Tare	Max Payload	
20' FL	internal dimension	millimeters (mm)	5,618	2,438	2,210	kilograms (kg)	2,950	26,650
		feet (ft)	18'5.2'	8'	7'3"	pounds (lb)	6,500	60,690
40' FL	internal dimension	millimeters (mm)	11,652	2,438	1,955	kilograms (kg)	5,530	39,470
		feet (ft)	38'2.7"	8'	6'5"	pounds (lb)	12,190	87,020

Flatrack 20'x 8'x 8'6"



Flatrack 40'x 8'x 8'6"



### 20-foot / 40-foot Open Tops

Allowing cargo to be loaded from the top, open top (OT) containers are particularly suitable for bulky or unusual cargo such as machinery. They are fitted with a PVC tarpaulin cover and attachable bows with cable sealing devices. The container doors can be removed to make the stuffing of cargo more convenient. Manufactured from steel, open top containers come in 20-foot and 40-foot sizes.

The dimensions below are for reference only. Actual dimensions are to be checked on-site.

Container Dimension						Weight		
			Length	Width	Height	Tare	Max Payload	
20' OT	internal dimension	millimeters (mm)	5,897	2,352	2,348	kilograms (kg)	2,260	28,220
		feet (ft)	19'4.2"	7'8.6"	7'8.4"	pounds (lb)	4,982	62,218
	door opening	millimeters (mm)		2,340	2,280			
		feet (ft)		7'8.1"	7'5.8"			
	roof aperture	millimeters (mm)	5,674	2,252				
		feet (ft)	18'7.4"	7'4.7"				
40' OT	internal dimension	millimeters (mm)	12,024	2,352	2,348	kilograms (kg)	3,980	26,500
		feet (ft)	39'5.4"	7'8.6"	7'8.4"	pounds (lb)	8,774	58,426
	door opening	millimeters (mm)		2,340	2,280			
		feet (ft)		7'8.1"	7'5.8"			
	roof aperture	millimeters (mm)	11,798	2,232				
		feet (ft)	38'8.5"	7'3.9"				

Open Top 20'x 8'x 8'6"



Open Top 40'x 8'x 8'6"



## Tips and Suggestions

Please send us the following details of your cargo to ensure a fast response to your rate enquiries:

- Dimensions (Length x Width x Height)
- Gross weight
- Lifting and lashing point
- Center of gravity

### How do I define Out of Gauge (OOG) and Breakbulk (BB) cargo?

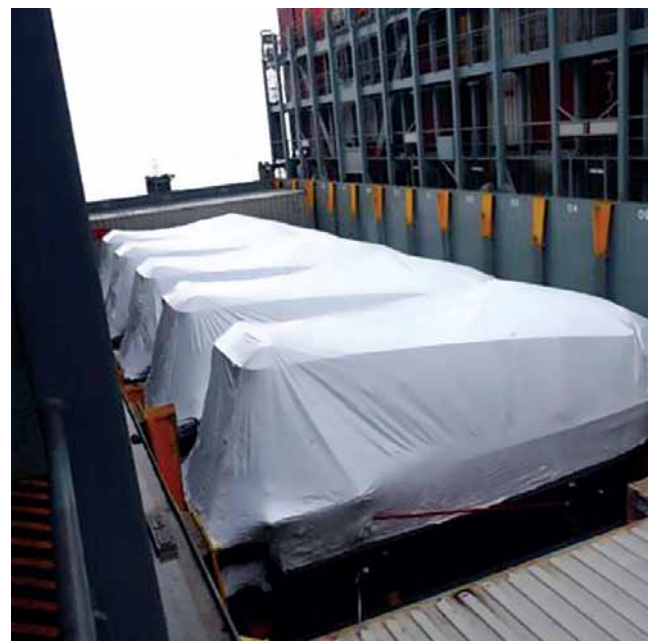
OOG Standards (including packing):

- Length: within 11,652mm (38'2.7")
- Width: exceeds 2,438mm (8')
- Height: exceeds 2,210mm (7'3") for 20-ft FL  
or 1,955mm (6'5") for 40-ft FL
- Weight: within 34.5mt (38 tons)

BB Standards (including packing):

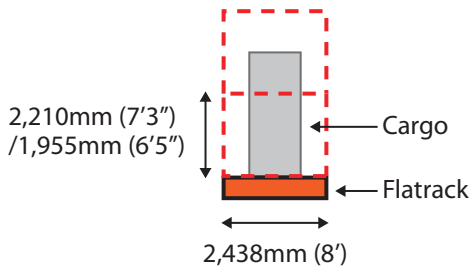
- Length: exceeds 11,652mm (38'2.7")
- Width: exceeds 4,000mm (13'1.5")
- Height: exceeds 4,000mm (13'1.5")
- Weight: exceeds 34.5mt (38 tons)
- or any combination of the above

Please note that these standards apply in most cases but are still subject to cargo outlines, weight distribution, terminal capabilities and other conditions.

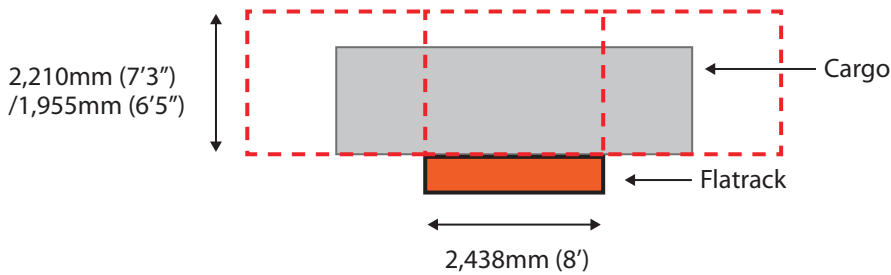


# Voided Space Calculation

**Over-height** (total space occupied 20-ft : 2 TEU / 40-ft : 4 TEU)

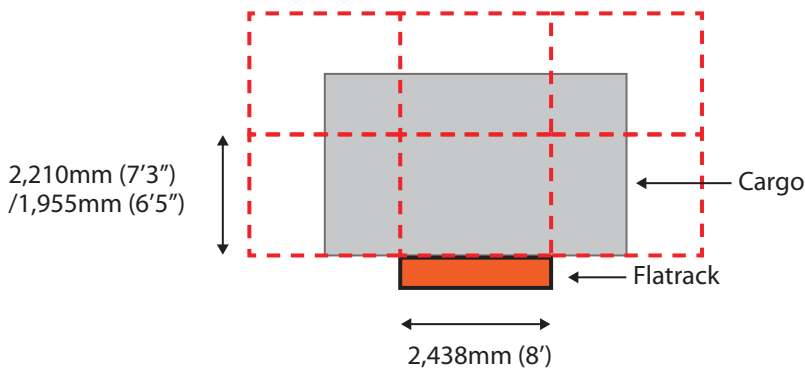


**Over-width** (total space occupied 20-ft : 3 TEU / 40-ft : 6 TEU)



**Over-width and over-height**

(total space occupied 20-ft : 6 TEU / 40-ft : 12 TEU)



**Terminal/Inland operation restrictions**

- Different countries or cities have their own restrictions
- Please refer to the "Operational Restrictions" section in our OOCL local websites at [www.oocl.com/eng/localsites](http://www.oocl.com/eng/localsites) for further details

At OOCL, we understand your business; we take it personally. For enquiries, please contact our local customer service representatives or email us at [pct@oocl.com](mailto:pct@oocl.com). Please visit our website at [www.oocl.com](http://www.oocl.com) for more information.



*We take it personally*

[www.oocl.com](http://www.oocl.com)