

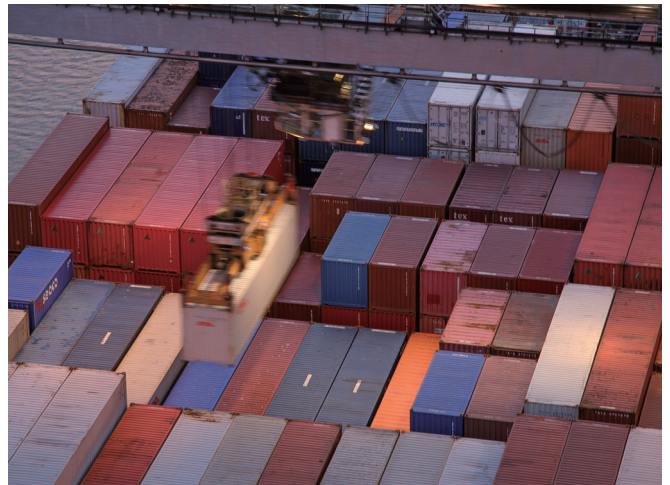
China Pakistan Express (CPX)

OOCL is inaugurating a new China Pakistan Express service (CPX), which fulfils the company's commitment to strategically enhance our business network from Far East to the Indian Subcontinent region.

The CPX service operates with 5 x 3,500 – 4,000 TEU vessels, will provide direct calls to Pakistan and Mundra in West India with faster transit times and increased frequency, offering customers the choice of an alternative gateway for moving cargo in and out of the Indian state of Gujarat.

SERVICE FEATURES

- Direct port calling at Shanghai, Ningbo, Shekou, Singapore, Karachi, Mundra, providing customers with a stable, reliable and a competitive service linking China and the Indian Subcontinent;
- Dedicated service for Far East Asia, Pakistan and West India
- Cargo to / from other South East Asian countries can be transhipped via Singapore



COMPETITIVE TRANSIT TIMES

Westbound

- From Shanghai: 6 days to Singapore, 14 days to Karachi, 17 days to Mundra
- From Ningbo: 5 days to Singapore, 13 days to Karachi, 16 days to Mundra
- From Shekou: 3 days to Singapore, 11 days to Karachi, 14 days to Mundra
- From Singapore: 7 days to Karachi, 10 days to Mundra

Eastbound

- From Karachi: 1 day to Mundra, 8 days to Penang, 10 days to Singapore, 14 days to Hong Kong, 15 days to Kaohsiung, 18 days to Shanghai, 19 days to Ningbo
- From Mundra: 6 days to Penang, 8 days to Singapore, 12 days to Hong Kong, 13 days to Kaohsiung, 16 days to Shanghai, 17 days to Ningbo
- From Penang: 1 days to Singapore, 5 days to Hong Kong, 6 days to Kaohsiung, 9 days to Shanghai, 10 days to Ningbo
- From Singapore: 4 days to Hong Kong, 5 days to Kaohsiung, 8 days to Shanghai, 9 days to Ningbo
- From Hong Kong: 1 days to Kaohsiung, 4 days to Shanghai, 5 days to Ningbo



Shanghai/Ningbo/Shekou/Singapore/
Karachi/Mundra/Penang/Singapore/
Hong Kong/Kaohsiung/Shanghai



Transit Time (Days)

(Westbound)			
From / To (Depart/Arrive)	Singapore (Thu)	Karachi (Fri)	Mundra (Mon)
Shanghai (Fri)	6	14	17
Ningbo (Sat)	5	13	16
Shekou (Mon)	3	11	14
Singapore (Fri)		7	10

Transit Time (Days)

(Eastbound)							
From / To (Depart/Arrive)	Mundra (Mon)	Penang (Mon)	Singapore (Wed)	Hong Kong (Sun)	Kaohsiung (Mon)	Shanghai (Thu)	Ningbo (Fri)
Karachi (Sun)	1	8	10	14	15	18	19
Mundra (Tue)		6	8	12	13	16	17
Penang (Tue)			1	5	6	9	10
Singapore (Wed)				4	5	8	9
Hong Kong (Sun)					1	4	5

Calling Ports

CPX		
Ports	ETA	ETD
Shanghai	Thu	Fri
Ningbo	Fri	Sat
Shekou	Mon	Mon
Singapore	Thu	Fri
Karachi	Fri	Sun
Mundra	Mon	Tue
Penang	Mon	Tue
Singapore	Wed	Wed
Hong Kong	Sun	Sun
Kaohsiung	Mon	Tue
Shanghai	Thu	Fri



We take it personally

www.oocl.com