

Mega Cargo on the Move...



Oversize Project Cargo

*Think
Out
of
the
Box*



Oversized Cargo & Yacht Shipping

Orient Overseas Container Line (OOCL) is one of the world's leading container transport and logistics service providers, with more than 280 offices in 55 countries around the world.

OOCL offers:

- More than 80 weekly services
- Customer-centric service
- Innovative IT systems
- Global network
- Dedicated commitment to safety, quality and environmental care

At OOCL, we understand your business; *we take it personally*

- Visit www.oocl.com for more information about OOCL.

OOCL understands that good things can come in all forms, shapes and sizes. Special, oversized cargo can be particularly tricky and challenging to transport from place to place. Our dedicated and professional team works closely 24-7 to take utmost care of your special cargo needs.

From oversized cargo to yachts and other special projects, OOCL offers a dedicated team, special equipment, an extensive network and our unique 'take it personally' service to ship your special cargo all over the world at very competitive prices.

Oversized Cargo

OOCL's dedicated project cargo team offers expertise in handling and stowage of your oversized cargo. We know that this type of unique cargo requires extra special care and handling and we aim to transport your special equipment in the safest way possible. We "take it personally" to deliver your special cargo to its destination in pristine condition.

We offer a one-stop reliable service which includes:

- Dedicated expertise and personal care
- Fast response time to your enquiry
- An extensive network and frequent sailing schedules ([click here for details](#))
- Coordination with in-house logistics provider OOCL Logistics to provide door-to-door delivery



Yacht Shipping

OOCL's special cargo team is highly experienced in transporting valuable yachts. You can trust our professional team to transport your yacht safely and securely.

We offer a fixed schedule and port-to-port service which is ideal for shipments to and from Asia. OOCL offers very competitive rates with a one-stop-shop service and fast responses to your enquiry.

Please click [here](#) for more details of our service routes and sailing schedules.

Contact pct@oocl.com for more details.



Special Equipment for special cargo

Your special cargo will need dedicated equipment to carry it in a comfortable, safe and secure environment. OOCL offers 20' and 40' flatracks, and 20' and 40' open top containers.

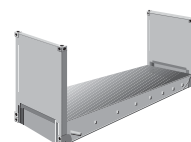
20' / 40' Flatracks

Flatracks are especially suited to heavy loads or cargo that needs loading from the top or sides, such as pipes and machinery. OOCL offers collapsible and non-collapsible containers with or without walls. Manufactured from steel, flatrack containers come in 20 ft and 40 ft sizes.

The below dimensions are for reference only. Actual dimensions are to be checked on site

Cargo size		Internal Dimension				Weight	
		Length	Width	Height		Tare	Max. Payload
20' FL	centimetres	561.8	243.8	223.3	kilograms	2,950	26,000
	feet	18'5"	7'11"	7'3.5"	pounds	6,500	57,320
40' FL	centimetres	1165.2	243.8	195.5	kilograms	5,530	38,000
	feet	38'2.5"	7'11"	6'4.5"	pounds	12,190	83,775

Flatracks 20' x 8' x 8'6"



Flatracks 40' x 8' x 8'6"



20' / 40' Opentops

Allowing cargo to be loaded from the top, open top containers are particularly suitable for bulky or unusual cargo such as machinery. They are fitted with a PVC tarpaulin cover and attachable bows with cable sealing devices. The container doors can be removed to make the stuffing of cargo more convenient. Manufactured from steel, open top containers come in 20 ft and 40 ft sizes.

The below dimensions are for reference only. Actual dimensions are to be checked on site

Cargo size		Internal Dimension				Weight	
		Length	Width	Height		Tare	Max. Payload
20' OT	centimetres	589.7	235.2	236	kilograms	2,260	27,000
	feet	19'4"	7'8.5"	7'8.6"	pounds	4,982	59,524
40' OT	centimetres	1203.2	235.2	236	kilograms	3,980	26,000
	feet	39'5"	7'8.5"	7'8.6"	pounds	8,774	57,320

Open Top 20' x 8' x 8'6"



Open Top 40' x 8' x 8'6"



Dedicated team for your special cargo

OOCL is renowned for our 'take it personally' service and dedicated quality people. Your special cargo requires even more care and attention to detail and you can trust our professional team to take care of it. Our project cargo team can provide expert advice such as terminal and vessel restrictions, documentation issues, equipment, best stowage instruction etc.

Contact our Project Cargo team today for more details. We will respond to your enquiry immediately for rates or operational enquiries.

We look forward to hearing from you! pct@oocl.com



We provide
360° door
to door services
with dedicated team
and innovative
technology
supporting.



Tips/Suggestions

Dimensions (LxWxH)

- Gross Weight
- Lifting and lashing point
- Centre of Gravity

How do I define Out of Gauge (OOG) and Breakbulk (BB) cargo?

OOG Standards (including the packing)

- L: within 11.65 m
- W: exceeds 2.43m
- H: exceeds 2.23m (20FR) or 1.95 (40FR)
- Weight: within 34.5 mt

BB Standards (including the packing)

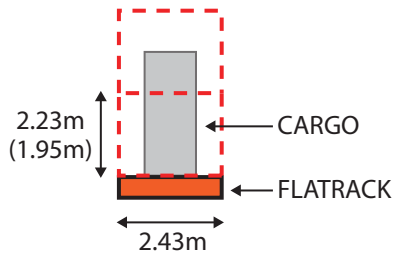
- L: exceeds 11.65m
- W: exceeds 4m
- H: exceeds 4m
- Weight: exceeds 34.5 mt
- or any combination of the above

Please note that these standards apply in most cases but are still subject to cargo outlines, weight distribution, terminal capabilities etc,

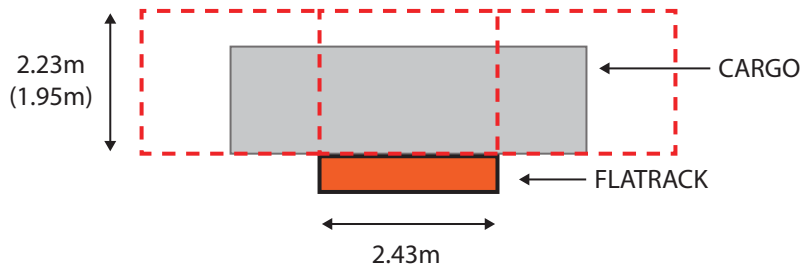


Voided space calculation

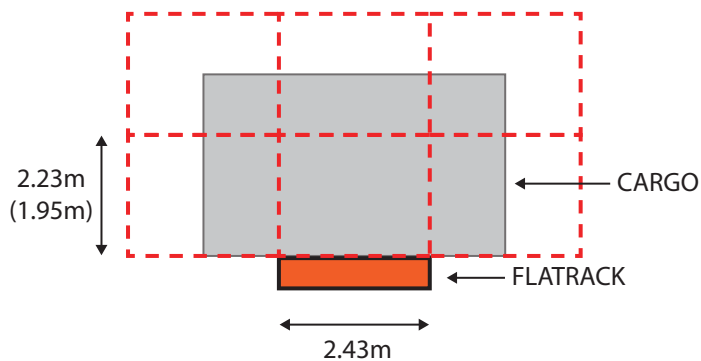
- Over-height (Total space occupied - 20' : 2 teu / 40' : 4 teu)



- Over-width (20' : 3 teu / 40' : 6 teu)



- Over-width and over-height (20' : 6 teu / 40' : 12 teu)



- Terminal/Inland operation restrictions
 - Different countries/cities hv own restrictions
 - Refer to "Operational Restrictions" section in our OOCL local sites for further details (<http://www.oocl.com/eng/localsite>)



We take it personally

www.oocl.com