

CUSTOMER

NEWSLETTER

November 13, 2020

Inside This Issue:

[Introduction](#)

[OOCL Orders Seven New Ships](#)

[Product of the Week: Pacific China Central 1 \(PCC1\)](#)

[Service Updates: Marine Terminal Gate Schedule \(Thanksgiving Holiday\)](#)

[BNSF Railroad Light Load Program for Bulk Agricultural Commodities](#)

[Project Cargo: Reaching New Heights](#)

[My OOCL Center: Quick Links](#)

[ProTip: Tariff and Rate Inquiries](#)

[Our People Special Feature: We Take it Personally!](#)



OOCL
We take it personally

Dear Valued Customer,

Thank you for your interest in our newsletter.

We hope you find our most recent edition informative and please contact OOCL for your ocean transportation needs.

OOCL
We take it personally.

OOCL Orders Seven New Ships

OOCL is pleased to announce that we have signed newbuilding contracts to order seven 23,000 TEU container ships. The expected delivery schedule to begin in the year of 2023.



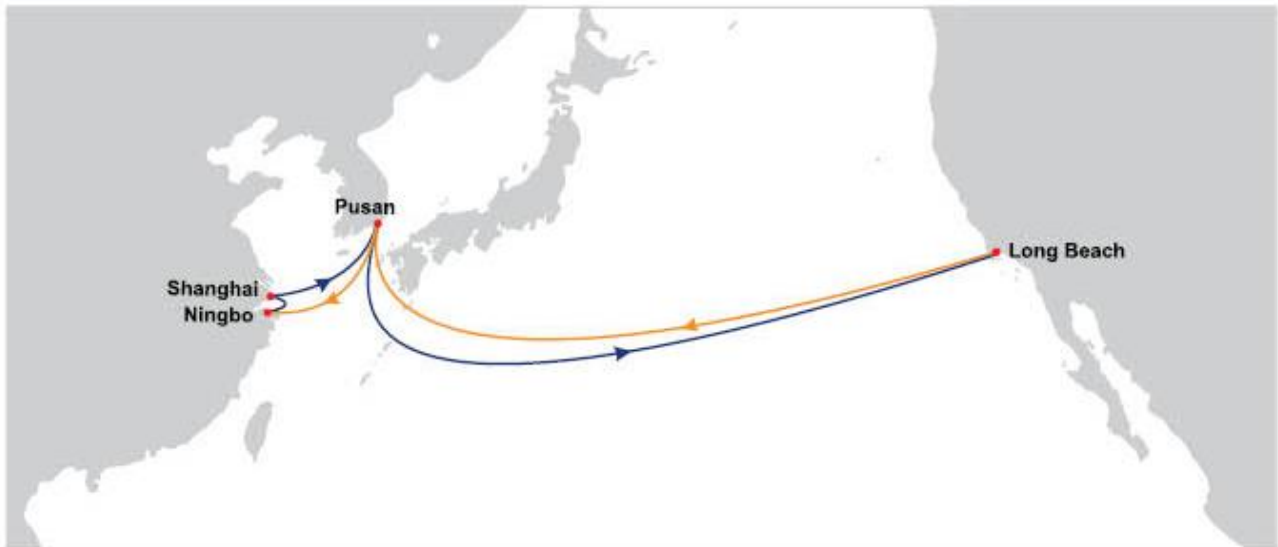
This order of seven new containerships is consistent with the long-term planning of our current newbuildings program, first launched in 2015 and enhanced by the order of five 23,000 TEU sister ships announced earlier in March this year. We believe the investment in these fuel-efficient and state-of-the-art vessels will play an important role in strengthening the overall competitiveness of our fleet, meeting long-term strategic growth objectives of the group, and securing our position as one of the top global players in the industry.

OOCL's expansion into this class of mega vessels is consistent with our strategic plan to form a complete independent loop of ships of optimal size in the Asia-Europe trade, where we intend to further enhance fleet efficiency and improve services to our customers. Today's investment supports our strong belief in this trade as one of the world's major corridors of commerce for decades to come.

Product of the Week- Pacific China Central 1 (PCC1)

The PCC1 continues to be an OOCL core product operating within the Ocean Alliance partnership servicing the US Pacific Southwest gateway. Fast transit time from Pusan to Long Beach—only 11 days.

Pacific China Central 1 (PCC1)



Port Rotation

EB: Ningbo - Shanghai - Pusan - Long Beach

WB: Long Beach - Pusan - Ningbo - Shanghai

Highlights

- Best-in-class product to Pacific Southwest from Korea
- Fastest transit time to Pusan, Ningbo, and Shanghai from Long Beach
- Long Beach Container Terminal
- OOCL-operated service

Transit Time (Days)

Asia to North America (Eastbound)

From \ To		Long Beach	
			Mon
Pusan	Thu		11
Shanghai	Tue		13
Ningbo	Sun		15

Transit Time (Days)

North America to Asia (Westbound)

From \ To		Pusan	Ningbo	Shanghai
		Thu	Sat	Sun
Long Beach	Sat	19	21	22

Service Updates-Marine Terminal Gate Schedules

The following marine terminal gates have announced they will be closed on November 26, 2020 in observance of **Thanksgiving Holiday** in the **United States**:

Updated marine terminal gate closure information for the Thanksgiving holiday will be posted on the OOCL USA website under [Local News](#).

- **Boston, Massachusetts**
 - Conley Marine Terminal
- **New York & New Jersey**
 - APM Terminal
 - Maher Terminal
- **Baltimore, Maryland**
 - Ports America (Seagirt) Terminal
- **Norfolk, Virginia**
 - Virginia International Gateway Terminal
 - Norfolk International Terminal

The following marine terminal gates have announced they will be closed on November 27, 2020 in observance of the **Day After Thanksgiving** in the **United States**:

- **Boston**
 - Conley Marine Terminal
- **Baltimore, Maryland**
 - Ports America (Seagirt) Terminal



BNSF Railroad Light Load Program for Bulk Agricultural Commodities

Effective immediately, the BNSF is implementing a program for limiting bulk agricultural exports shipping from their Logistics Park Chicago (LPC) facility. BNSF is requesting that all export agricultural commodities be limited to 52,000 lbs. of laden cargo. This change will help BNSF to maximize resources to meet export demand and improve velocity within their facility.

OOCL partners with BNSF on shipments moving from LPC to marine terminals in Los Angeles, Long Beach, Oakland, and Seattle/Tacoma.

In addition, effective December 1, 2020, the same weight restriction program will apply at their Logistics Park Kansas City (LPKC) facility.

OOCL partners with BNSF on shipments moving from LPKC to marine terminals in Los Angeles and Long Beach.

It is anticipated that this measure will be in place through at least January 2021.

Project Cargo: Reaching new heights

Project Cargo REACHING NEW HEIGHTS



Speed to the Market

Our service offerings provide you with superior quality and fast response.



Experienced Professionals

We understand your special cargo needs that requires attention to details.



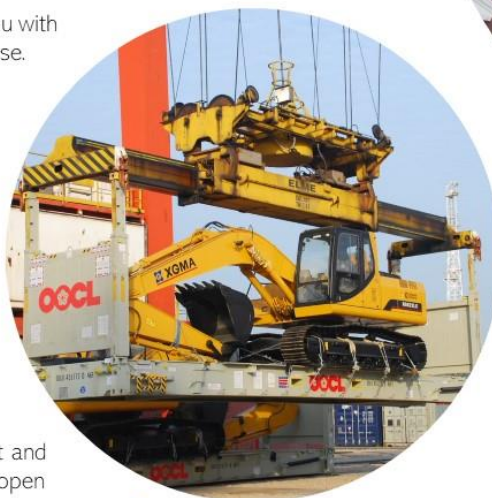
Safe and Secure

We provide expertise in handling and stowage of your oversized cargo.



Special Equipment

Investing in the latest equipment and technology is our priority. From open tops to flatracks and super racks, there is flexibility to accommodate your cargo needs and transport it safely.



Contact Us

For Rate Quote, contact NAPCRO@oocl.com.

For Booking Inquiries, contact NAOQCLPC@oocl.com.

For Long Beach Booking inquiries, contact LGBPC@oocl.com.

THINK OUTSIDE THE BOX

www.oocl.com/eng/ourservices/oversizedcargo

OOCL
We take it personally

[Return to Top](#)

My OOCL Center: Quick Links



MOC- My OOCL Center



Quick Links

Our My OOCL Center platform provides a “Quick Links” section that helps you to navigate our site, customize features and expedite your online request. It creates a shortcut for all your most used features.

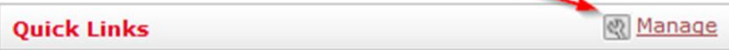
1 Log into MOC

Log into your “My OOCL Center” at www.oocl.com with your user ID and password.

2 Click on the “Manage” link

On the left-hand corner of the page there is a “Quick Links” section. Click on the “manage” link. It will prompt you to all available menu options.

My OOCL Center Welcome, Your Name ! 09 Nov 2020



To choose the functions, click on the arrow buttons to include or exclude from the “Selected Quick Links” categories. Click on the “Confirm” button.

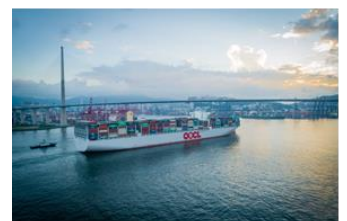
My Profile

Primary Information *	Preferences *	Access	E-mail Subscriptions	Quick Link
<div style="display: flex; justify-content: space-between;"> <div style="width: 45%;"> <p>Available Menu Items</p> <p>Available Functions:</p> <ul style="list-style-type: none"> Schedules <ul style="list-style-type: none"> Sailing Schedule Search My Favorite Queries Booking <ul style="list-style-type: none"> Booking Request Drafts Search Verified Gross Mass <p><small>(To select multiple functions, press the 'ctrl' key on keyboard while selecting.)</small></p> </div> <div style="width: 45%;"> <p>Selected Quick Links:</p> <ul style="list-style-type: none"> Booking -> Templates Service Request -> Submit Service Request Documentation -> Shipment Folder -> Shipment Folder Search Documentation -> Shipping Instructions -> Templates Documentation -> Shipping Instructions -> Search Documentation -> Bill of Lading -> B/L View and Print Verified Gross Mass -> VGM Declaration </div> </div> <div style="text-align: right; margin-top: 10px;"> <input type="button" value="Confirm"/> </div>				

3 Customize the Link Label

You can customize the name of the feature that will be displayed with your “Quick Links”. Once done, click on the “Save” button.

Link Label	Customize Link Label
Booking -> Templates	Make a OOCL Booking
Service Request -> Submit Service Request	booking amendment service request
Documentation -> Shipment Folder -> Shipment Folder Search	upload H2 shipment folder
Documentation -> Shipping Instructions -> Templates	#1 SI Creating and submitting
Documentation -> Shipping Instructions -> Search	#2 Search & amend SI
Documentation -> Bill of Lading -> B/L View and Print	#3 B/L Draft review, amend, approve, print
Verified Gross Mass -> VGM Declaration	



We take it personally

[Return to Top](#)

ProTip: Tariff and Rate Inquiries

PRO TIP

Tariffs and Rates via OOCL Website

Tariffs and Rates via OOCL Website

1. To access the Tariff and Rates via the OOCL website, please click on this [link](#). This will require a user ID and password to access it. This is a separate password than the one you utilize to access My OOCL Center. First time users, will need to click on “Register Now” button.
2. Once you have login to the website, you will be able to access global rate and rule tariff.

Tariffs & Rates

From this channel you can have access to our tariffs and rates (including freight and surcharges) for all ocean trades.

Global Rate Tariff	Click Here
Global Rule Tariff	Click Here
North American (NA) Inland Tariff (for TAT only) and European (EU) Inland Tariff	Click Here
All other inquiries (Online Web inquiry form)	Click Here
Historical U.S. rules/rates prior to 01 Nov 2016	Click Here



Additional Tips

For any rate inquiry, please visit:

<https://www.oocl.com/eng/contactus/Pages/rateinquiry.aspx>

Make sure to fill out the form and required fields. Once submitted, our Sales department will follow-up with the request.

[Return to Top](#)

Our People Special Feature- We Take it Personally!

Despite the disruption and uncertainty arising from COVID-19, our colleagues have found ways to stay positive and motivated. Our Long Beach office created a “themed clothing day” on Fridays to keep up with the team spirit!

They play a key role in supporting our West Coast port businesses.

People are our greatest asset and we care about their aspirations and create an environment for them to perform and realize their full potential.

Overcoming distances, together—we are here for you!

