

CUSTOMER

NEWSLETTER

November 24, 2021

Inside This Issue:

[Introduction](#)

[N2C3 Lite-Mini: Ports of Long Beach and Los Angeles track platform](#)

[Service Update-Marine Terminal Gate Schedules \(Thanksgiving holiday\)](#)

[OOCL Corporate Video](#)

[My OOCL Center: Standard Reports](#)

[Pro-Tip: Sailing Schedule Enhancements](#)

[We are here for you: Happy Thanksgiving](#)



OOCL
We take it personally

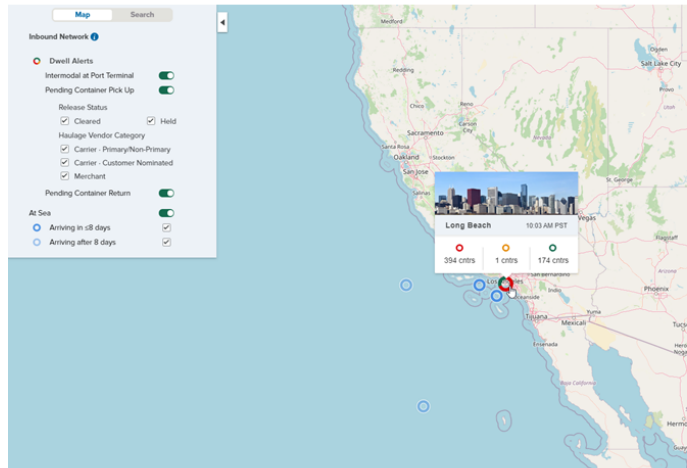
Dear Valued Customer,

Thank you for your interest in our newsletter.

We hope you find our most recent edition informative and please contact OOCL for your ocean transportation needs.

OOCL
We take it personally.

N2C3 Lite-Mini: Ports of Long Beach and Los Angeles track platform



N2C3 Lite Mini

To help ease harbor congestion at the Ports of Long Beach and Los Angeles, OOCL created a web-based powerful track and trace application called N2C3 Lite Mini to provide visibility and assist customers to manage their import shipments efficiently. For more information or access, contact your local sales representative.

PROACTIVELY TRACK & TRACE

N2C3 Lite-Mini assists you to plan and manage shipments that are ready to be picked up, moving intermodal and for incoming shipments that are on the water

ALERT MONITORING

The circles on the map is color-coordinated to quickly indicate on the location or if there is delay with your shipments

Features



Transparency on the number of days your containers are dwelling at the ports of Long Beach and Los Angeles



Map visualization and color scheme indication if a container is dwelling after 5 days at the port or after last free date



Access to monitor import shipments that are still on the water up to 30 days prior to vessel arrival to help with early planning



Download reports to obtain more information on a container level



Long Beach

3:48 PM PST

PCC3-OEP-OOCL EGYPT-039 E	Long Beach Container Termin...	11/26/21 06:00 AM PST	17
PVCS-VNB-COSCO SHIPPING AQUARIUS-018 E	Long Beach Container Termin...	12/02/21 06:00 PM PST	7
PVCS-SOP-COSCO PORTUGAL-047 E	Long Beach Container Termin...	12/05/21 07:00 PM PST	4

Service Updates-Marine Terminal Gate Schedules

The following marine terminal gates have announced they will be closed on November 25, 2021, in observance of **Thanksgiving Holiday** in the **United States**:

- **Boston, Massachusetts**
 - Conley Marine Terminal
- **New York & New Jersey**
 - APM Terminal
 - Maher Terminal
- **Baltimore, Maryland**
 - Ports America (Seagirt) Terminal
- **Norfolk, Virginia**
 - Virginia Intl Gateway Terminal
 - Norfolk International Terminal
- **Charleston, South Carolina**
 - North Charleston Terminal
 - Wando Terminal
- **Savannah, Georgia**
 - Georgia Port Authority
- **Florida**
 - Miami - South Florida Container Terminal
 - Port of Tampa
- **Mobile, Alabama**
 - APM Terminal
- **New Orleans, Louisiana**
 - Ports America Terminal
- **Houston, Texas**
 - Barbours Cut Terminal
 - Bayport Terminal
- **Long Beach, California**
 - Long Beach Container Terminal (LBCT)
 - Pacific Container Terminal (PCT) - SSA Pier J
- **Los Angeles, California**
 - Everport Container Terminal
 - Fenix Marine Terminal
 - W. Basin Container Terminal
 - Yusen Terminals Inc. (YTI)
- **Oakland, California**
 - Everport Terminal
 - Oakland International Container Terminal (OICT)
 - TraPac Terminal
- **Seattle & Tacoma, Washington**
 - T-18 Terminal, Seattle
 - T-30 Terminal, Seattle
 - Pierce Cty Terminal, Tacoma

In addition, the following marine terminal gates will also be closed on Nov. 26, 2021:

- **Boston**
 - Conley Marine Terminal
- **New Orleans, Louisiana**
 - Ports America Terminal
- **Florida**
 - Miami - South Florida Container Terminal
- **Long Beach, California**
 - Pacific Container Terminal (PCT) - SSA Pier J
- **Los Angeles, California**
 - Yusen Terminals Inc. (YTI) – Closed 2nd Shift

For intermodal rail schedules during the same holiday period, please refer to:

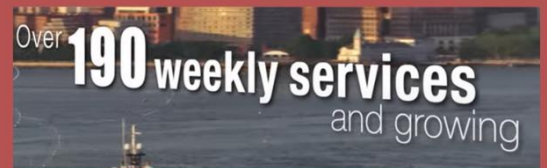
- BNSF Railroad [site](#)
- Norfolk Southern [site](#)
- CP Rail [site](#)
- CN Rail [site](#)

OOCL Corporate Video

With over 50 years of experience in shipping, OOCL is a world leader in providing integrated international container transportation and logistics services.

Our commitment to providing quality services, continual innovation and sustainability to the environment creates long-term value for our stakeholders.

At OOCL, *We Take it Personally!*



My OOCL Center: Standard Reports



MOC- My OOCL Center



Standard Reports

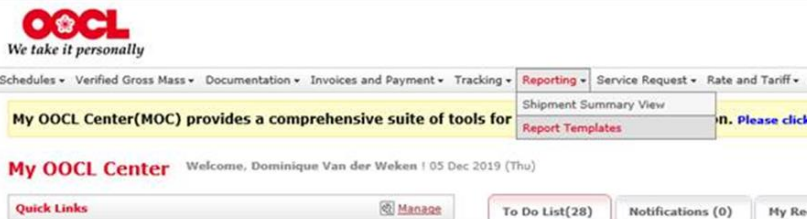
With My OOCL Center Reports you have access to 9 standard template reports for both export and import shipments including but not limited to:

- Receiving end-to-end milestone updates
- Verifying that cargo was loaded on vessel
- Monitoring import cargo

These reports provide you with access to your shipments' information in a quick and efficient manner.

1

Log into MOC and click on "Reporting" option from the menu then select "Report Templates."



2

Under "Customized Report Templates" select the "Standard Templates" tab. Select 1 of the 9 reports of your choice and copy the template to "My Templates" by clicking on the copy icon under the "Actions" column.

Customized Report Templates

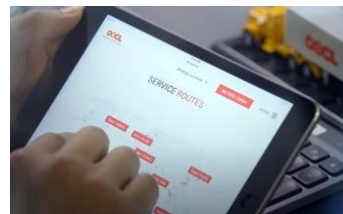
Template Name	Description	Shipments	Subscriptions	Last Requested	Last Modified	Actions
Active Bill of Lading	Shipments by bill of lading number.	Active	No Schedule Update		12 Jun 2019	Copy
Active Bookings	Shipments by booking number.	Active	No Schedule Update		12 Jun 2019	Copy
Carrier Invoice	Shippers and Consignees: Consolidate your carrier freight invoices by vessel/voyage and bill of lading number. Note: User must have the View Invoice Details privilege assigned in their user profile to run this report.	Active	No Schedule Update		12 Jun 2019	Copy
End-to-End Milestones	Transportation: Manage your complete shipment cycle from booking to delivery and return of containers.	Active	No Schedule Update	05 Dec 2019	12 Jun 2019	Copy
Export Bookings	Shippers and Forwarders: Obtain booking details and container activities before the cargo is loaded on the vessel.	Active	No Schedule Update		12 Jun 2019	Copy
Export Load Confirmation	Shippers and Forwarders: Track container movements from carrier receipt to arrival at destination.	Active	No Schedule Update		12 Jun 2019	Copy
Import Cargo Release	Consignees: Manage cargo pick-up based on cargo and Customs release.	Active	No Schedule Update		12 Jun 2019	Copy
Import Shipments	Warehouse Managers and Consignees: Manage your U.S. import shipments and arrange for pick-up/return of containers before demurrage/detention accrues.	Active	No Schedule Update		12 Jun 2019	Copy
Inbound Advice	Consignees: Plan for your cargo arrival and pickup as soon as the cargo is loaded on the vessel.	Active	No Schedule Update		12 Jun 2019	Copy

3

Once the standard template is saved under "My Templates," you will have the ability to modify, view the report online or email the report. These features are available under the "Actions" column.

Customized Report Templates

Template Name	Description	Shared	Shipments	Subscriptions	Last Requested	Last Modified	Actions
Export Bookings	Shippers and Forwarders: Obtain booking details and container activities before the cargo is loaded on the vessel.		Active	No Schedule		05 Dec 2019	Copy Update Email X



[Return to Top](#)

Pro-Tip: Sailing Schedule Enhancement

PRO TIP Sailing Schedule

OOCL's online platform My OOCL Center (MOC) was recently enhanced to display vessels without operating constraints. For more information on any features within MOC, contact OOCLCOM@oocl.com.



New Enhancement

Vessels that are displayed are available without operating constraints.



Time Savings

This update improves the booking experience and saves customers time to focus on available vessels.



How it works

Within the Sailing Schedule module on My OOCL Center, simply input your desired origin and destination city to search for available vessels. If the "book" column is blank, we are unable to accept bookings for that respective vessel at that time. Therefore, please select the next available vessel that has an active blue booking icon within the "book" column.



Book	Origin	CY Cutoff	Port of Load (POL)	ETD at POL	Port of Discharge (POD)	ETA at POD	Final Destination Hub (FND)	ETA at FND	Est. Transit Time (Days)	Vessel Voyage	Service	Cargo Nature	Haulage	
													Origin	Destination
	Las Angeles	13 Oct (Wed) 16:00	Long Beach	19 Oct (Tue)	Hong Kong	10 Nov (Wed)	Hong Kong	11 Nov (Thu)	22	COSCO PORTUGAL 046W	PVCS	Dry/Reefer	CY/Door	CY/Door
	Long Beach	13 Oct (Wed) 16:00	Long Beach	19 Oct (Tue)	Hong Kong	10 Nov (Wed)	Hong Kong	11 Nov (Thu)	22	COSCO PORTUGAL 046W	PVCS	Dry/Reefer	CY/Door	CY/Door
	Long Beach	13 Oct (Wed) 16:00	Long Beach	19 Oct (Tue)	Hong Kong	10 Nov (Wed)	Hong Kong	11 Nov (Thu)	22	COSCO PORTUGAL 046W	PVCS	Dry	CY	CY/Door
	Las Angeles	14 Oct (Thu) 16:00	Long Beach	23 Oct (Sat)	Hong Kong	13 Nov (Sat)	Hong Kong	14 Nov (Sun)	21	COSCO SHIPPING ANDES 018W	PVCS	Dry/Reefer	CY/Door	CY/Door
	Long Beach	14 Oct (Thu) 16:00	Long Beach	23 Oct (Sat)	Hong Kong	13 Nov (Sat)	Hong Kong	14 Nov (Sun)	21	COSCO SHIPPING ANDES 018W	PVCS	Dry/Reefer	CY/Door	CY/Door
	Long Beach	14 Oct (Thu) 16:00	Long Beach	23 Oct (Sat)	Hong Kong	13 Nov (Sat)	Hong Kong	14 Nov (Sun)	21	COSCO SHIPPING ANDES 018W	PVCS	Dry	CY	CY/Door
	Las Angeles	22 Oct (Fri) 12:00	Long Beach	28 Oct (Thu)	Hong Kong	16 Nov (Tue)	Hong Kong	17 Nov (Wed)	19	COSCO SPAIN 045W	PVCS	Dry/Reefer	CY/Door	CY/Door
	Long Beach	22 Oct (Fri) 12:00	Long Beach	28 Oct (Thu)	Hong Kong	16 Nov (Tue)	Hong Kong	17 Nov (Wed)	19	COSCO SPAIN 045W	PVCS	Dry/Reefer	CY/Door	CY/Door
	Long Beach	22 Oct (Fri) 12:00	Long Beach	28 Oct (Thu)	Hong Kong	16 Nov (Tue)	Hong Kong	17 Nov (Wed)	19	COSCO SPAIN 045W	PVCS	Dry	CY	CY/Door
	Las Angeles	29 Oct (Fri) 16:00	Long Beach	07 Nov (Sun)	Hong Kong	27 Nov (Sat)	Hong Kong	28 Nov (Sun)	20	COSCO NETHERLANDS 046W	PVCS	Dry/Reefer	CY/Door	CY/Door
	Long Beach	29 Oct (Fri) 16:00	Long Beach	07 Nov (Sun)	Hong Kong	27 Nov (Sat)	Hong Kong	28 Nov (Sun)	20	COSCO NETHERLANDS 046W	PVCS	Dry/Reefer	CY/Door	CY/Door
	Long Beach	29 Oct (Fri) 16:00	Long Beach	07 Nov (Sun)	Hong Kong	27 Nov (Sat)	Hong Kong	28 Nov (Sun)	20	COSCO NETHERLANDS 046W	PVCS	Dry	CY	CY/Door

[Return to Top](#)

We are here for you: Happy Thanksgiving

As we near the holiday season, OOCL wishes our US customers a safe and happy Thanksgiving. OOCL's virtual network continues to be strengthened in order to deliver the quality service that you have come to expect from us.

Our systems and people are available 24/7 to provide you support over the holidays and to assist with your business needs.

We are grateful for our customers and appreciate your continued patronage as we overcome the distances together.



OOCL WISHES YOU A

HAPPY THANKSGIVING



During this holiday season, we wanted to express our gratitude for our partnership.

Our staff and systems are available 24/7 at your fingertips. OOCL continues to be your vital link to world trade.



FROM OUR TABLE TO YOURS.

