

# CUSTOMER

## NEWSLETTER

February 18, 2022

### Inside This Issue:

[Introduction](#)

[Product of the Week:  
Montreal Gateway \(GEX1  
and GEX2\)](#)

[Service updates: Marine  
terminal gate schedules  
\(President's Day and  
Family Day holidays\)](#)

[Hazardous cargo  
booking information](#)

[My OOCL Center:  
Shipping instructions](#)

[Pro-Tip: Shipment  
folder/hazardous](#)

[Mobile solutions](#)



**OOCL**  
*We take it personally*

Dear Valued Customer,

Thank you for your interest in  
our newsletter.

We hope you find our most  
recent edition informative  
and please contact OOCL  
for your ocean transportation  
needs.

OOCL  
*We take it personally.*

[Return to Top](#)

## Product of the Week: Montreal Gateway (GEX1 and GEX2)

The Montreal gateway offers 2 services with direct connection to the UK and Northern Europe (GEX1 & GEX2). Some highlights include:

- Faster gateway to/from US Midwest than US East Coast.
- Fastest EB transit to Southampton in the market.
- Only direct Liverpool call in the market to/from Montreal.

### Gateway Express 1 (GEX1)



#### GEX1 Port Rotation

**WB:** Antwerp - Bremerhaven - Le Havre - Liverpool - Montreal

**EB:** Montreal - Antwerp - Bremerhaven - Le Havre - Liverpool

### Gateway Express 2 (GEX2)



#### GEX2 Port Rotation

**WB:** Southampton - Antwerp - Hamburg - Montreal

**EB:** Montreal - Southampton - Antwerp - Hamburg

## Service updates- Marine terminal gate schedules

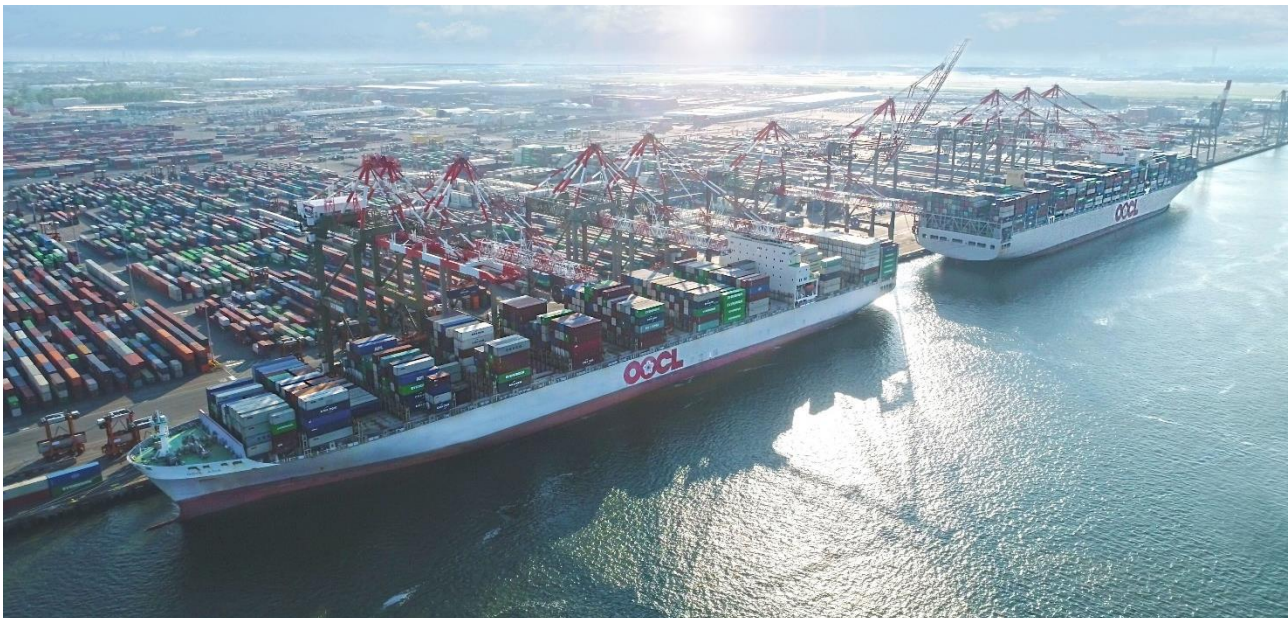
---

The following marine terminal gates have announced they will be closed on February 21, 2022, in observance of **President's Day** in the **United States**:

- **Boston, Massachusetts**
  - Conley Marine Terminal
- **Tampa, Florida**
  - Tampa Terminal
- **Miami, Florida**
  - South Florida Container Terminal
- **Oakland**
  - Everport Oakland
- **Tacoma**
  - Pierce County Terminal

In observance of the **Family Day** holiday in **Canada**, the following marine terminal gates have announced they will also be closed on February 21, 2022:

- **Halifax**
  - Halterm
- **Vancouver**
  - Vanterm
  - Deltaport
  - Centerm
- **Prince Rupert**
  - DPW Prince Rupert



## Hazardous cargo booking information

---

To facilitate the booking submission of your hazardous cargo, please find below important information regarding the acceptance process.

- **Vessel Operator and Port:** All hazardous shipments are subject to acceptance by vessel operator, port of loading, port of discharge, transship port and final destination approval prior to container delivery at point of origin.
- **Document Upload:** Documents related to Hazardous (Dangerous Goods) shipments must be uploaded under appropriate document name via our online platform, My OOCL Center (MOC) at [www.oocl.com](http://www.oocl.com).
- **Preliminary DG:** Preliminary DG documentation must:
  - Be provided same day as booking registration.
  - Be uploaded to MOC as "Preliminary DG Certificate."
- **Port Restrictions:**
  - YTI/LA requires the final DG document 24 hours prior to arrival.
  - Port of Houston requires shippers to submit final DG documents via [hazpro@poha.com](mailto:hazpro@poha.com).
  - Maher Terminal in NYC requires shippers to send all hazardous documentation to this email address: [hazdoc@maherterminals.com](mailto:hazdoc@maherterminals.com) prior to the arrival of the container. The subject line must include the vessel name and container number.
- **Material Safety Data Sheets:** Material Safety Data Sheets/Safety Data Sheets to be uploaded to MOC as "Material Safety Data Sheet."
- **Special Certificates:** Special Certificates of approval to be uploaded to MOC as "Certificate of Conformance".
- **Tank Information:** Tank Certification/Tank Container Periodic Inspection Report must be provided for DG tank containers indicating tank is under current certification.
- **DG Documentation Review:** It can take up to one business day to review documentation for DG bookings. OOCL may require additional documentation due to OOCL's own regulations in addition to the IMDG regulations.
- **Final DG Documentation:** Final DG documentation including container number information must be received one business day prior to receipt of cargo at origin, dispatch and rail billing request.
  - The final DG documentation should be uploaded via MOC as "DG Certificate for International Transportation" document name option. For any questions on how to upload documents via MOC, contact [OOCLECOM@oocl.com](mailto:OOCLECOM@oocl.com).

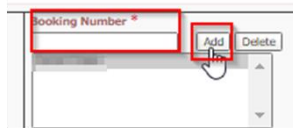
## My OOCL Center: Shipping instructions



### Shipping Instructions

My OOCL Center (MOC) allows users to create Shipping Instructions (SI) that features a date stamp history of SI submissions and 24/7 access to amend SIs.

- 1 Log into your “My OOCL Center”. From the main menu, make the following selection: Documentation → Shipping Instructions → Shipping Instructions Submission. Then insert your booking and click on the “Add” button.



- 2 The booking details will auto-populate. You can add, remove or edit the 3 tabs: Details, Container and Cargo and Preview.

#### Details Tab

##### User Reference Type

- For example, there is a list of options that allows you to add important reference numbers such as Government Export# (AES), PO#.

##### Required Fields (\*)

- Please fill out all of the required fields, including: BL parties, vessel voyage, POL and POD, other BL instructions (prepaid or collect) and BL handling (BL type, distribution and number of copies).

##### Other B/L handling requests

- For any other special instructions for our documentation team, you can utilize this field to insert remarks (example below).

Other B/L handling Requests:

Telex Release / Split BL

##### Container and Cargo Tab

- Please fill out information on a container level such as quantity, package type, cargo nature and seal type.

##### Preview Tab

- You can review your shipping instructions in full prior to submission.



We take it personally

[Return to Top](#)

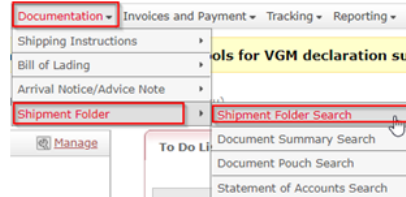
## Pro-Tip: Shipment folder/hazardous


# PRO TIP

## Shipment Folder/Hazardous

My OOCL Center offers customers the ability to upload required documents for their booking. This is an essential feature for those customers handling hazardous goods and are required to upload documents.

- 1 Once you have logged into your My OOCL Center account navigate to “Documents”, “Shipment Folder”, “Shipment Folder Search”, then enter your booking number and click search.






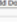
- 2 The shipment folder will list the documents required by OOCL under the “Required by OOCL” tab.
- 3 The blue action icon  will allow you to upload your required documents.

Search Result

Booking #	B/L #	Container #	Vessel/Voyage	Origin	Part of Load	Part of Discharge	Destination
			OOCL SAN FRANCISCO 164W	Minneapolis, Minnesota, United States	Vancouver 22 Mar 2022, 16:00 PDT (estimated)	Kaohsiung 03 Apr 2022, 23:00 TWT (estimated)	Keelung, Taiwan

Details of the Shipment Folder

Required by OOCL | User-Defined

All	Document Name	Booking Number	Received on	Uploaded Time	Uploaded from	Description/Remarks	Document Status	Actions
<input type="checkbox"/>	Shipping Instruction/B. Master						Requested	
<input type="checkbox"/>	DG Certificate for International Transport						Requested	
<input type="checkbox"/>	Verified Gross Mass						Requested	
<input type="checkbox"/>	Preliminary DG Certificate		12 Jan 2022, 11:51 CST	12 Jan 2022, 11:51 CST		Version 1	Verified	

Buttons: Add Document, Submit Service Request, Document Pouch, Batch Download

- 4 The “Document Status” column will let you know if the document is required, verified or rejected. You will also see a time stamped confirmation for uploaded documents.
- 5 For Hazardous bookings required documents include:
  - Preliminary DG
  - Final DG - DG Certificate for International transport. ( This includes container #, Seal# and signature)
  - When required, the Material Safety Data Sheet (MSDS) can be uploaded under its given name.

[Return to Top](#)

## Mobile Solutions

# OOCL Lite

Shipment visibility & quality service at your fingertips, wherever you are

←

Long Beach → Hong Kong

Sailing from 14 Feb 2022

SORT BY DEPT ▾ DIRECT ▾ REEFER ▾ SERVICE ▾

22 Feb	15 Mar	PVCS	21
POL	POD	D/R	DAYS
Long Beach	Hong Kong		
22 Feb	15 Mar	PVCS	21
POL	POD	DRY	DAYS
Long Beach	Hong Kong		
25 Feb	19 Mar	PVCS	22
POL	POD	D/R	DAYS
Long Beach	Hong Kong		
25 Feb	19 Mar	PVCS	22
POL	POD	DRY	DAYS
Long Beach	Hong Kong		

OOCL Lite is a real time mobile solution that provides you with shipment visibility and most up to date information at your fingertips! It features: sailing schedule, cargo and vessel tracking, shipment details, port schedule and local news.

For more information, please visit our [site](#) and watch the tutorial video on how to navigate through the app.



[Return to Top](#)