

CUSTOMER

NEWSLETTER

April 29, 2022

Inside This Issue:

[Introduction](#)

[The importance of ship classification](#)

[Vessel tracking on OOCL.com](#)

[Container Specifications](#)

[My OOCL Center: Service contract number update](#)

[Pro-Tip: Administrative features](#)

[OOCL celebrates Earth month](#)



OOCL
We take it personally

Dear Valued Customer,

Thank you for your interest in our newsletter.

We hope you find our most recent edition informative and please contact OOCL for your ocean transportation needs.

OOCL
We take it personally.

[Return to Top](#)

The importance of ship classification

In the international shipping industry, all marine vessels of 100 gross registered tons or more must be supervised by a classification society or ship inspection agency with the intent to verify that the ship is designed and constructed in accordance with set requirements or legislations, and that vessel maintains essential services on board.



This includes evaluating the structural strength, checking the intactness and stability of the ship's hull. In addition, the process also reviews the safety, reliability and function of the main propulsion and steering systems, power generating system and other features and auxiliary systems which have been built into the ship.

Drawings of all principles including structural, subdivision, machinery, electrical stability must be approved by the classification society or ship inspection agency before the construction of the ship. In addition, it should be aligned with the class rules and international legislation like SOLAS, MARPOL, MLC, and all conventions adopted, rectified and effective.

After sea trial and when the ship is ready for delivery, the classification society or ship inspection agency will issue a certificate of class and a set of statutory certificates and records. The certificate is generally valid for 5 years and subject to annual survey and renewal when the expiry date of the certificate is due.

There are more than 50 different classification societies, 12 have joined the International Association of Classification Societies (IACS).

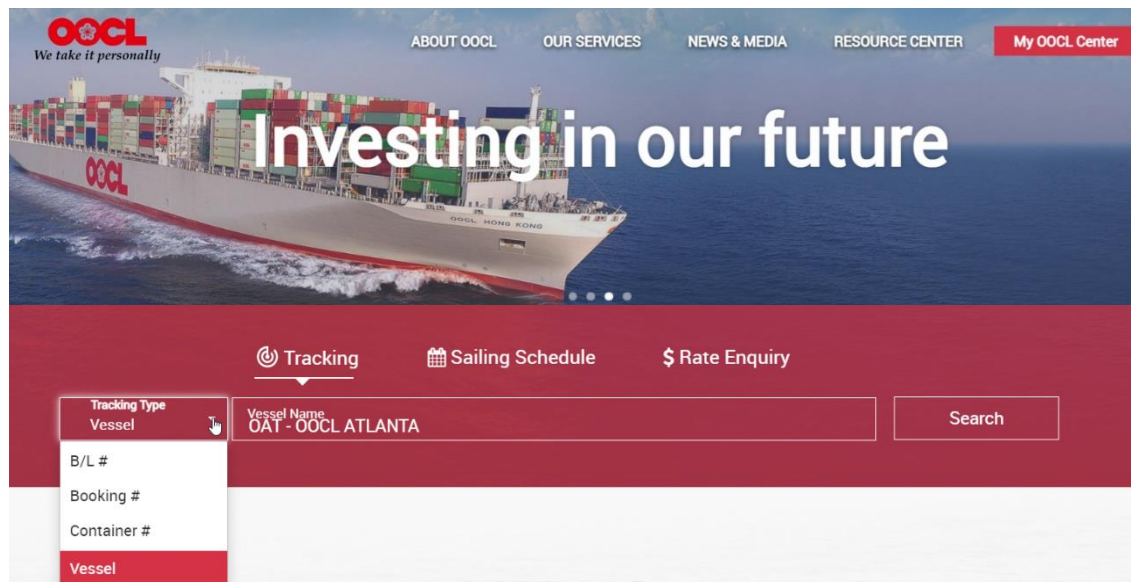
The major classification societies are: Lloyd's register of Shipping, American Bureau of Shipping, China Classification Society, Bureau Veritas, Det Norske Veritas and Nippon Kaiji Kyokai. Most OOCL vessels are classified by the American Bureau of Shipping.

Vessel Tracking on OOCL.com

The OOCL website features vessel tracking solutions indicating potential delays such as congestion, weather, or holiday.

To begin your search:

1. Go to [oocl.com](https://www.oocl.com).
2. Click on the drop-down menu and select "Vessel".
3. Type the vessel name.
4. Click on the "search" button.



The search results will provide details on the arrival and departure on a port level. If there is a delay, it will be indicated in the remarks column.

Vessel Tracking

Search Result

NOTICE: The information shown is for indication only.

Carrier: OOCL Vessel: OAT - OOCL ATLANTA Voyage: All Port: All
Date Range: 09 Nov 2021 - 01 Feb 2022

Port	Arrival		Service	Voyage	Departure		Service	Voyage	Remarks
	Local Time				Local Time				
Southampton	16 Nov 2021, 12:58 Tue (actual)		ATE1	139E	17 Nov 2021, 15:48 Wed (actual)		ATE1	136W	Delayed : Previous Port Delayed
Antwerpen	18 Nov 2021, 21:39 Thu (actual)		ATE1	136W	20 Nov 2021, 02:09 Sat (actual)		ATE1	136W	Delayed : Previous Port Delayed
Rotterdam	20 Nov 2021, 22:25 Sat (actual)		ATE1	136W	22 Nov 2021, 06:45 Mon (actual)		ATE1	136W	Delayed : Previous Port Delayed
Bremerhaven	24 Nov 2021, 22:42 Wed (actual)		ATE1	136W	27 Nov 2021, 00:25 Sat (actual)		ATE1	136W	Delayed : Previous Port Delayed
Norfolk	06 Dec 2021, 07:06 Mon (actual)		ATE1	136W	07 Dec 2021, 10:00 Tue (estimated)		ATE1	137E	Delayed : Previous Port Delayed
New York	12 Dec 2021, 08:00 Sun (estimated)		ATE1	137E	14 Dec 2021, 06:00 Tue (estimated)		ATE1	137E	Delayed : Port Rotation Changed
Charleston	16 Dec 2021, 07:00 Thu (estimated)		ATE1	137E	17 Dec 2021, 07:00 Fri (estimated)		ATE1	137E	Delayed : Previous Port Delayed
Southampton	25 Dec 2021, 06:00 Sat (estimated)		ATE1	137E	26 Dec 2021, 00:00 Sun (estimated)		ATE1	138W	Delayed : Previous Port Delayed
Antwerpen	26 Dec 2021, 21:30 Sun (estimated)		ATE1	138W	27 Dec 2021, 14:30 Mon (estimated)		ATE1	138W	Delayed : Previous Port Delayed
Rotterdam	28 Dec 2021, 05:30 Tue (estimated)		ATE1	138W	29 Dec 2021, 09:30 Wed (estimated)		ATE1	138W	Delayed : Previous Port Delayed
Bremerhaven	30 Dec 2021, 05:00 Thu (estimated)		ATE1	138W	31 Dec 2021, 15:00 Fri (estimated)		ATE1	138W	Delayed : Previous Port Delayed
Le Havre	01 Jan 2022, 21:30 Sat (estimated)		ATE1	138W	02 Jan 2022, 12:30 Sun (estimated)		ATE1	138W	Delayed : Previous Port Delayed
New York	10 Jan 2022, 07:00 Mon (estimated)		ATE1	138W	11 Jan 2022, 15:00 Tue (estimated)		ATE1	139E	
Norfolk	12 Jan 2022, 18:00 Wed (estimated)		ATE1	139E	13 Jan 2022, 20:00 Thu (estimated)		ATE1	139E	
Charleston	17 Jan 2022, 07:00 Mon (estimated)		ATE1	139E	18 Jan 2022, 01:00 Tue (estimated)		ATE1	139E	

Port Call: 1 to 15 of 18

Page 1 of 2 Next

Container Specifications



At OOCL, we take the transportation of your cargo personally and we offer customers a vast and modern fleet of containers. From straightforward dry boxes to garmentainers to state-of-the-art controlled atmosphere reefers, OOCL has the size and type of box to suit your needs. Our local offices are happy to advise you on which is the best container for your cargo.

Please find below a list of the different types of containers we offer:

- [General purpose](#)
- [High cube](#)
- [Refrigerated](#)
- [Open top](#)
- [Flatracks](#)
- [Garmentainers](#)
- [Super rack](#)



OOCL's container fleet is one of the youngest in the industry and continually updated. Our comprehensive maintenance program ensures all containers are in prime condition and meet or exceed international quality standards. Manufactured from corrosion resistant steel (corten), stainless steel or aluminium, OOCL containers are of the highest quality.

Please click [on this link](#) for enquiring the detailed container specification of a specific container within our fleet.



[Return to Top](#)

My OOCL Center: Service contract number update



MOC- My OOCL Center

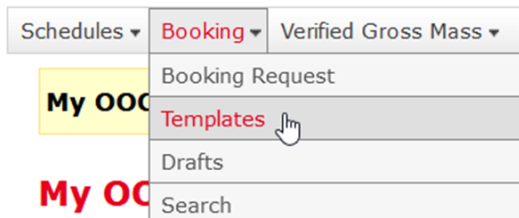


Service Contract Number Update

My OOCL Center (MOC) has multiple features within our online tools that require a valid and up to date service contract number. For example, booking templates will require a valid service contract to rate correctly. The steps below explain on how to update the contract number within your booking templates. For any questions, please contact our e-commerce department at OOCLCOM@oocl.com.

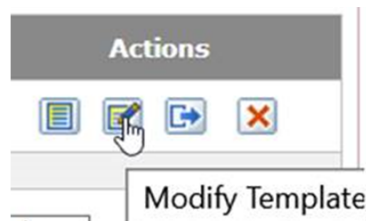
1

Log into MOC and click on “Booking” option from the menu then select “Templates.”



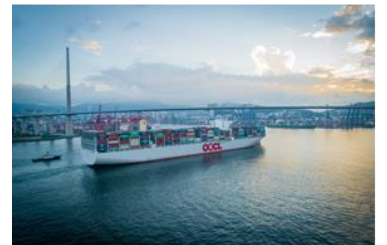
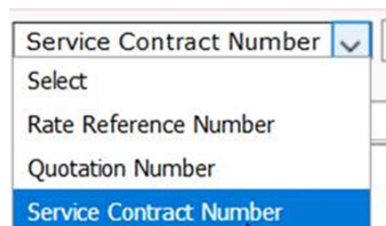
2

Click on the action button called “Modify Template” on the right-hand corner of the screen for the respective template that needs updating.



3

Within the booking template, update the service contract or rate reference number at the top. Then click “Save Template” button at the booking right hand side.



OOCL
We take it personally

[Return to Top](#)

Pro-Tip: Administrative features

PRO TIP Administrative features

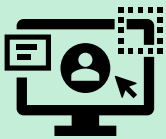
My OOCL Center (MOC) provides important administrative features such as the ability to update company address as well as adding new users to have access to manage shipments within the same company.



Changing Company Address

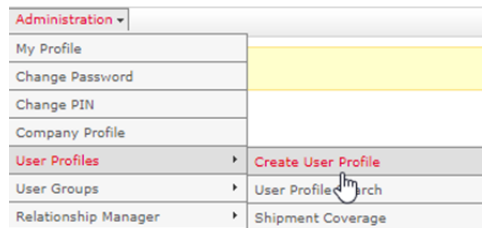
It is important for your company to maintain accurate and current address on My OOCL Center (MOC). This will assist our customer service team to process your bookings faster and if you order bill of lading paper online it will assist to ship it to the correct address.

- 1 Log into MOC and click on “Administration” option from the menu then select “Company profile” to identify your company’s administrator. The contact information of the administrator will be available under the “Administrator” section.
- 2 The administrator must login to MOC. In the main menu, select “Administration” option and then click on the “Company Profile.” Make the required changes to update your address and click on the “Save” button at the bottom of the screen.



Adding New Users (For Company Administrators only)

- 1 The Administrator will log into MOC and click on the “Administration” menu. Then select “User Profiles” and click “Create User Profile” .



- 2 Under the “Primary Information” tab, fill out the required fields (*).
- 3 After providing Primary Information, then click on the “Preferences” tab. Select the “Preferred Time Zone” and “Preferred E-mail Format” fields. HTML Format is the most popular.
- 4 Then click on the “Access” tab. Select the “Standard Access” option and click on the arrow button to move to the Standard Access to the selected column. Make sure to click on the “Confirm” Button. Select the user’s Access functions and click on the “Save” button at the bottom. The user ID will be displayed in the online profile. The system will auto generate the user ID and a temporary password will be sent to the user’s email address.

[Return to Top](#)

OOCL celebrates Earth month

OOCL is committed to preserving the environment and making the world a better place to live for ourselves and future generations. We continue to address the impending issues relating to global warming, air pollution, biodiversity and marine environment degradation, and energy consumption which present critical environmental challenges.

All OOCL vessels meet and exceed international environmental standards, adhering to OOCL's own Safety, Quality and Environmental (SQE) management system; demonstrating OOCL's commitment to environmental protection and good corporate citizenship.

For more information on our sustainability efforts, please visit our [site](#).

We take it personally and celebrate Earth month!



HAPPY
EARTH
MONTH



[Return to Top](#)