



NORTH AMERICA CUSTOMER NEWSLETTER

February 3, 2023

Inside this Issue:

[OOCL's Pacific
Southwest \(PSW\)
Loops](#)

[TPM23- Save the date!](#)

[Did you know: about
our e-subscription
services?](#)

[MOC: Company
registration](#)

[Pro Tip: Cargo weight
changes](#)


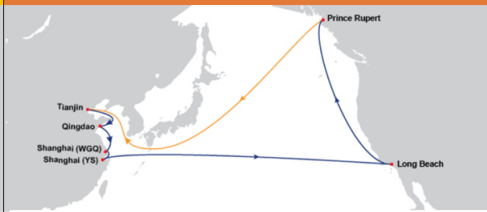

[ECHO Program](#)



We take it personally

OOCL's Pacific Southwest (PSW) Loops

OOCL's Pacific Southwest (PSW) Loops

Pacific China Central 1 (PCC1)	Pacific China North 1 (PCN1)	Pacific Vietnam China South (PVCS)
 <p>+ Product Advantages</p> <ul style="list-style-type: none"> ✓ Fastest transit time from Long Beach to Pusan, Ningbo and Shanghai ✓ On-dock rail from Chicago, Kansas City, Memphis and Dallas ✓ Return of WB Pusan call improving transshipment access 	 <p>+ Product Advantages</p> <ul style="list-style-type: none"> ✓ Direct access and express connection from Long Beach to North China ✓ Now calling Prince Rupert and Long Beach, which offers operational advantages. ✓ Double call Wai Gao Qiao and Yang Shan terminal in Shanghai 	 <p>+ Product Advantages</p> <ul style="list-style-type: none"> ✓ Best-in-class product from South China to the Pacific Southwest ✓ On-dock rail from Chicago, Kansas City, Memphis and Dallas ✓ Direct Vietnam coverage

Other Features

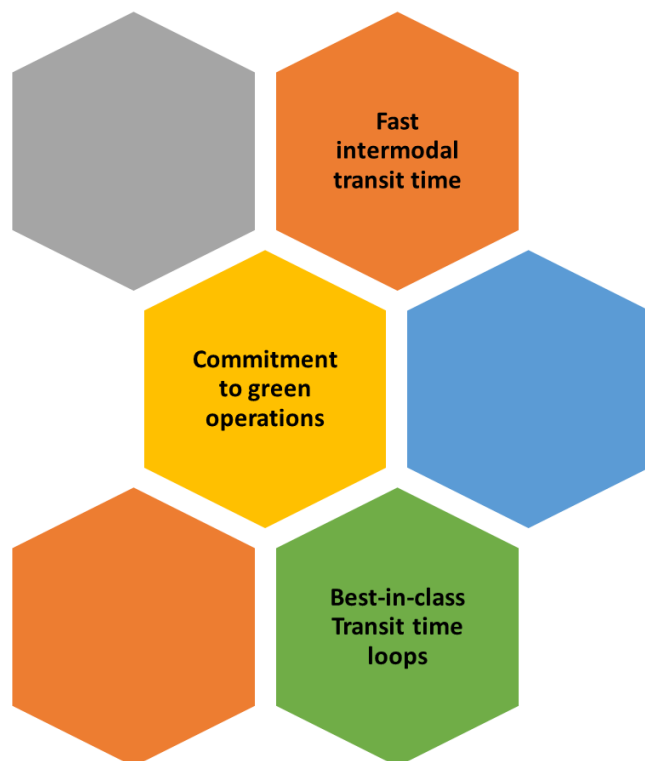


Largest, fastest and most reliable on-dock rail in North America.

Best trucking turn times on the West Coast (50% faster than PSW average)



Lowest terminal emissions per container in the world!



TPM23 Conference- Save the date!

TPM is the trans-pacific premier conference for the global container shipping and logistics community. Founded in 2001, TPM annually presents the industry's most in-depth program covering topics on container shipping in North America and globally.

The conference is organized by The Journal of Commerce (JOC) within S&P Global Market Intelligence and it will be held on February 26 until March 1, 2023 at the Long Beach Convention Center.

OOCL is a proud gold sponsor and partner of the TPM23 conference.

This year's theme is "Picking Up the Pieces", which focuses on navigating through the post-pandemic effects on the shipping industry.

The graphic is divided into two main sections. The top section has a dark, textured background. In the upper left, a red rectangle contains the text "Event Partner" in white. In the upper right, the "Journal of Commerce" logo is displayed in white, with "by S&P Global" in smaller red text below it. The center of this section features the large text "TPM23" in red and white, with "February 26 – March 1, 2023" and "Long Beach, California" in white below it. A large, colorful container ship is shown from an aerial perspective, sailing diagonally across the frame. The bottom section features a photograph of an OOCL container ship, the "OOCL HONG KONG", sailing on the ocean. The ship is white with a red hull and is loaded with colorful containers. In the top left of this section, the OOCL logo is shown in red, with the tagline "We take it personally" in black below it.

Event Partner

Journal of Commerce
by S&P Global

TPM23
February 26 – March 1, 2023
Long Beach, California

OOCL
We take it personally

OOCL HONG KONG

Did you know: about our e-subscription services?

OOCL.com site allows you to subscribe and receive the following updates and notifications through our [e-Subscription](#). There are 4 main categories:



Corporate News: This includes company worldwide information such as press releases, service launches, OOCL awards, amongst other topics.



Local News: Topics related to local country information such as advisories, terminal gate closures, and customer newsletters.



Sailing Schedule Update: Select the country of choice to view schedule.



Vessel Information Board: Select the desired country of choice to view vessel information and choose notification frequency.



Did you know?

Setting up OOCL's e-Subscription

- 1 Click [here](#) to access the link to our website.
- 2 At the left top corner of the screen click on "Change location."
- 3 Click on "Americas" and select your respective country.
- 4 Click on the "e-subscription" menu option (top right-hand corner of OOCL page). Then, fill out the following fields: Email Address, Name, Company Name & Company Location (origin country).

e-Subscription

e-Subscription	Change Subscription	Remove Subscription
--------------------------------	-------------------------------------	-------------------------------------

Thank you for your interest in OOCL.com's subscription service.
By subscribing to e-Subscription you will receive sailing schedule updates via email. Simply complete the form below to take advantage of this free service. All mandatory fields are denoted by *

* Email Address	* Name
* Company Name	* Company Location

- 5 Under "e-Subscription Customization", click on "Local News". Then click on "Add Country & Region" select the North American countries of your choice. Then click on "Add" button. Click on "Submit" button.

[Return to top](#)

MOC: Company registration



MOC- My OOCL Center



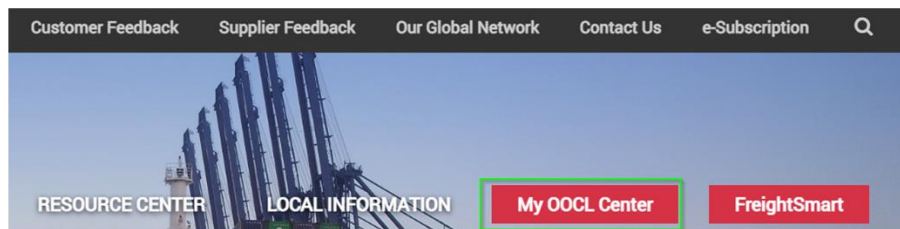
Company Registration

My OOCL Center allows you to manage all your shipments online. To begin utilizing My OOCL Center, you first need to register to become a user. There are 2 quick ways to register as outlined below. For any questions, please reach out to your local e-commerce team at OOCLECOM@oocl.com.

New Company Registration

1

For initial registration, simply visit our site: www.oocl.com. In the right upper corner, click on the red button "My OOCL Center."



2

After clicking on "My OOCL Center" red button, the login window will prompt. Click on the "Create account" link and it will take you to the "Company Membership Registration" form. Fill out and click on "Agree and Submit" button.

New User- Company already registered

3

If your company is already registered, and you would like to be added as a new user, you may contact the company administrator who can create new users under the company account. Additionally, they can reference our [guideline](#) for further steps to add a new user.



[Return to top](#)

ProTip: Cargo weight changes

PRO TIP

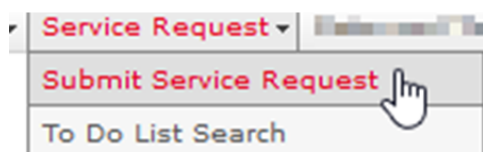


Cargo Weight Changes

My OOCL Center (MOC) allows you to request amendments to your booking(s) by submitting a Service Request, giving you the ability to update the cargo weight.

1

Log into MOC, click on “Service Request” from the main menu and then “Submit Service Request”.



2

Create a Service Request by adding the booking number and clicking on the “Search” button.

Create Service Request

3

Under the “Service Request” column, choose the service request named “Booking-Container Amendment Request” by clicking on the hyperlink “Online”.

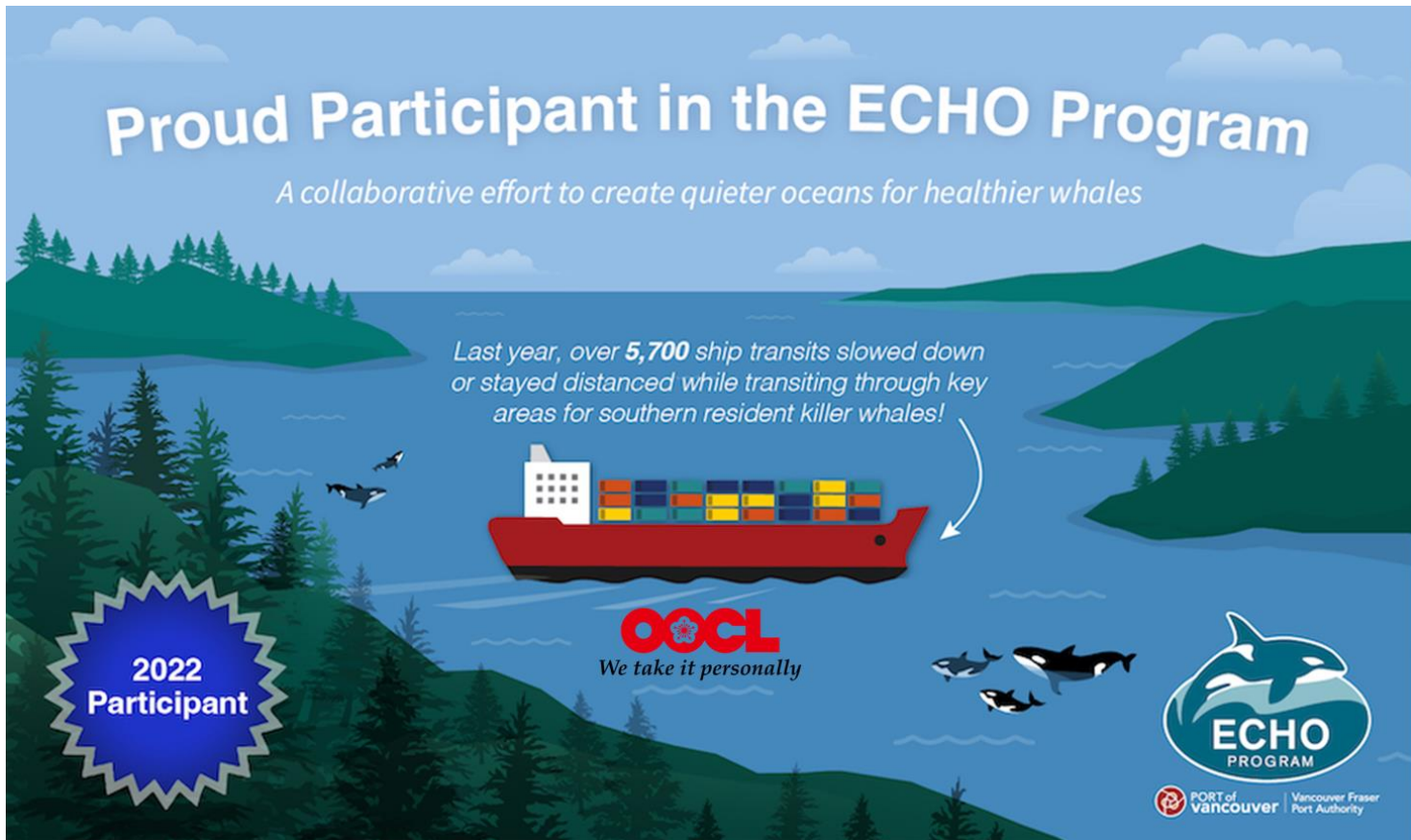
Service Request Summary			
Booking Number: 			
Service Request		Type	Description/Handling Instructions
AES-Canada Proof of Report Information		Online	Submit your AES or Canada Proof of Report Information
Add/Change Booking Reference Information		Online	Amend one reference or add/remove/change other reference numbers
Booking-Container Amendment Request		Online	Increase/Split/Reduce booking
Cancel Booking Request		Online	Request booking cancellation
Change Booking Parties Request		Online	Change Shipper Forwarder or Consignee
Change Booking Routing Request		Online	Request routing change prior to vessel departure
Change Cargo Nature or Description Request		Online	Change cargo nature/type or commodity description
Export Carrier Door Pickup Instructions		Online	Submit your door pickup instructions for export door pickup
Export Change of Destination North America		Online	Export Change of Destination for cargo originating in North America after container(s) loaded onboard vessel

4

Once the pre-filled form populates, choose the “Change Ctr Size/Type” checkbox and in the “Amend Container Information as follows” box, add revised cargo weight and submit.

[Return to top](#)

ECHO Program



OOCL is proud to participate in the Enhancing Cetacean Habitat and Observation (ECHO) Program, a collaborative effort to reduce the impacts of commercial shipping on at-risk whales.

In 2022, our vessel operators slowed down while transiting through important areas for the endangered southern resident killer whales, helping to measurably reduce underwater noise and create a quieter ocean for healthier whales.

We place the utmost importance on high standards of performance in environmental, social, and corporate governance. Over the years, we have taken important measures to improve our sustainability performance. This includes implementing an open stakeholder engagement process to help us better understand and identify the focus areas towards our long-term Sustainability Strategy.

Our proactive efforts to care for the environment fall under four main categories:

- Emissions Reduction
- Marine Biodiversity Conservation
- Sustainable Management of Resources
- Environmental Promotion

To learn more about OOCL's environmental care, please visit our [site](#).